

TACKLING CORONAVIRUS (COVID-19)
CONTRIBUTING TO A GLOBAL EFFORT

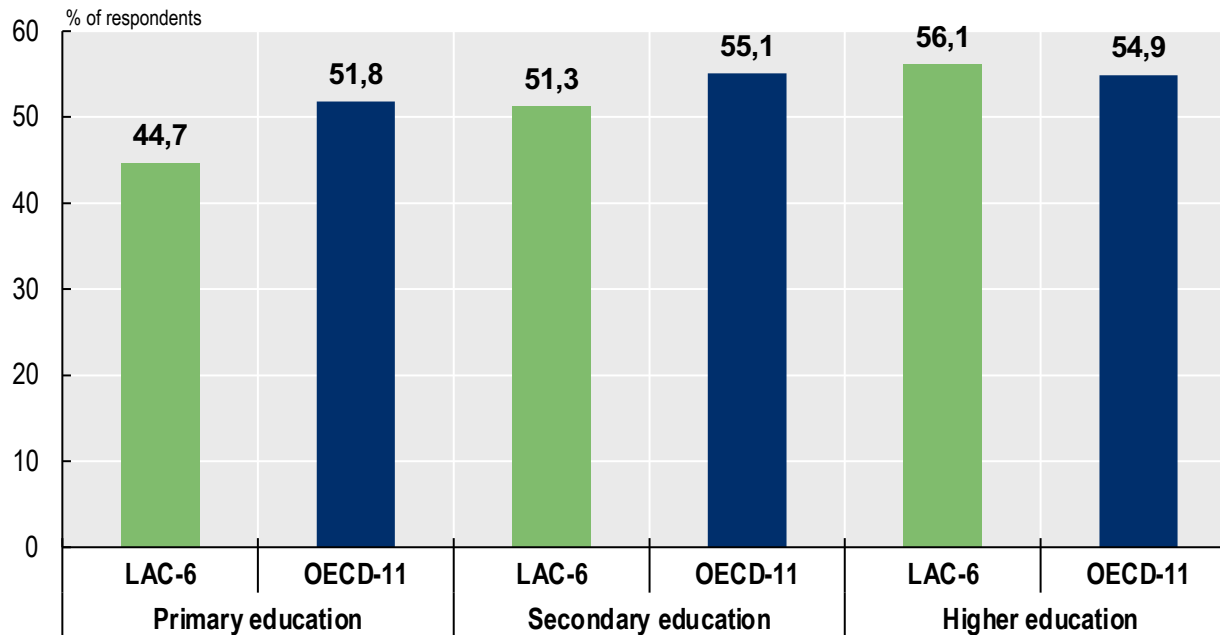
ACCESS BARRIERS AND EXPERIENCES IN PRIMARY HEALTH CARE IN LATIN AMERICA AND THE CARIBBEAN

Webinar Series on Essential Public Health Functions
Pan-American Health Organization

Frederico Guanais, PhD
April 23rd 2021

Before COVID: LAC, OECD similar access times to a PC visit ...

Last time when needed, got a primary care consultation the same or next day without needing to use emergency room, LAC-6 and OECD-11, adults by level of education, 2012-2014

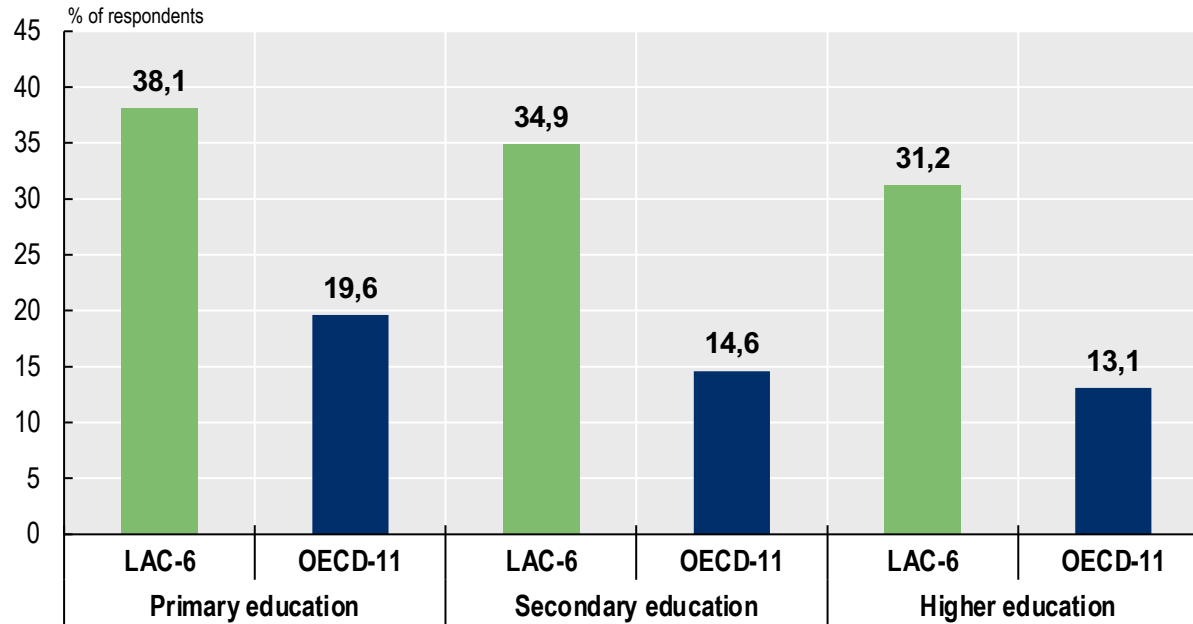


Source: Guanais et al. (2019) From the Patient's Perspective: experiences with primary health care in Latin America and the Caribbean.



... but much higher differences in financial barriers to care ...

Had a problem but did not see a doctor or skipped a test or treatment because of cost, and/or had serious problems paying for healthcare, LAC-6 and OECD-11, adults by level of education, 2012-2014

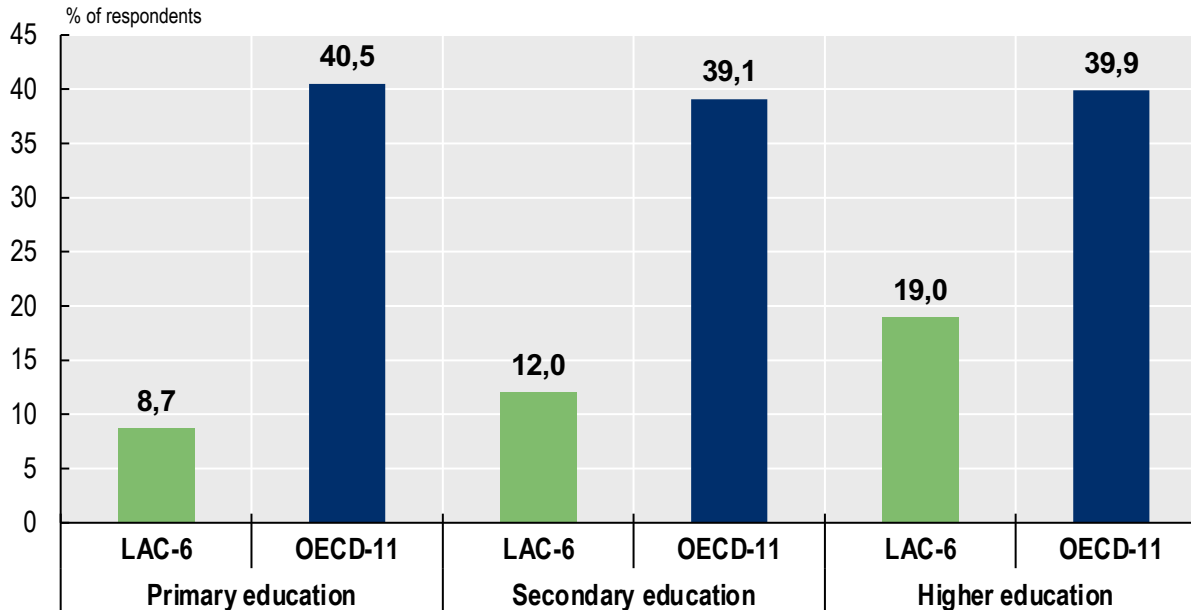


Source: Guanais et al. (2019) From the Patient's Perspective: experiences with primary health care in Latin America and the Caribbean.



... and even higher gaps in person-centered primary health care.

Has (i) a regular doctor or place of care that (ii) knows your medical history, (iii) is easy to contact during office hours, and (iv) helps to coordinate care, LAC-6 and OECD-11, adults by level of education, 2012-2014

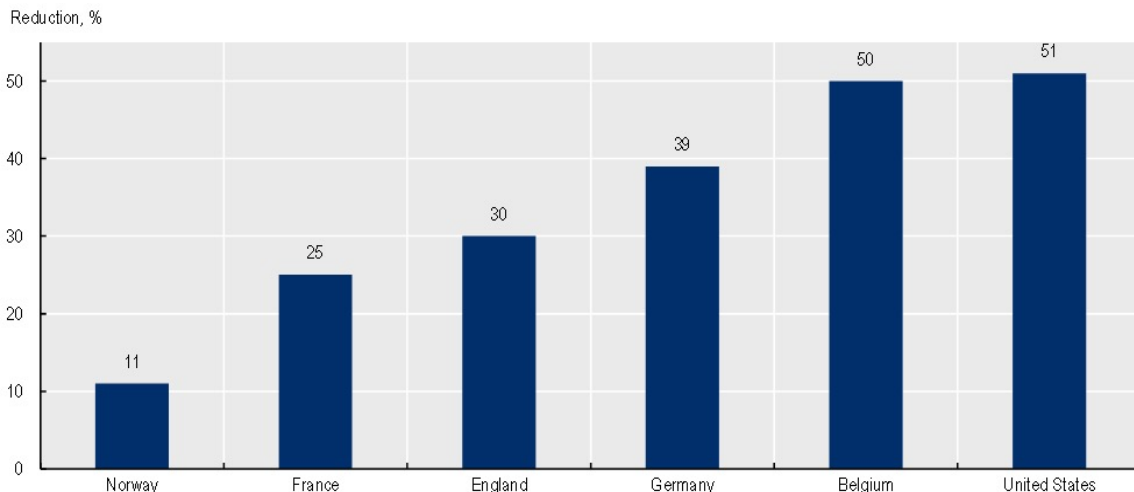


Source: Guanais et al. (2019) From the Patient's Perspective: experiences with primary health care in Latin America and the Caribbean.



COVID-19 has renewed challenges for primary health care everywhere

Reduction in the volume of primary care consultations during the first wave (Spring 2020)



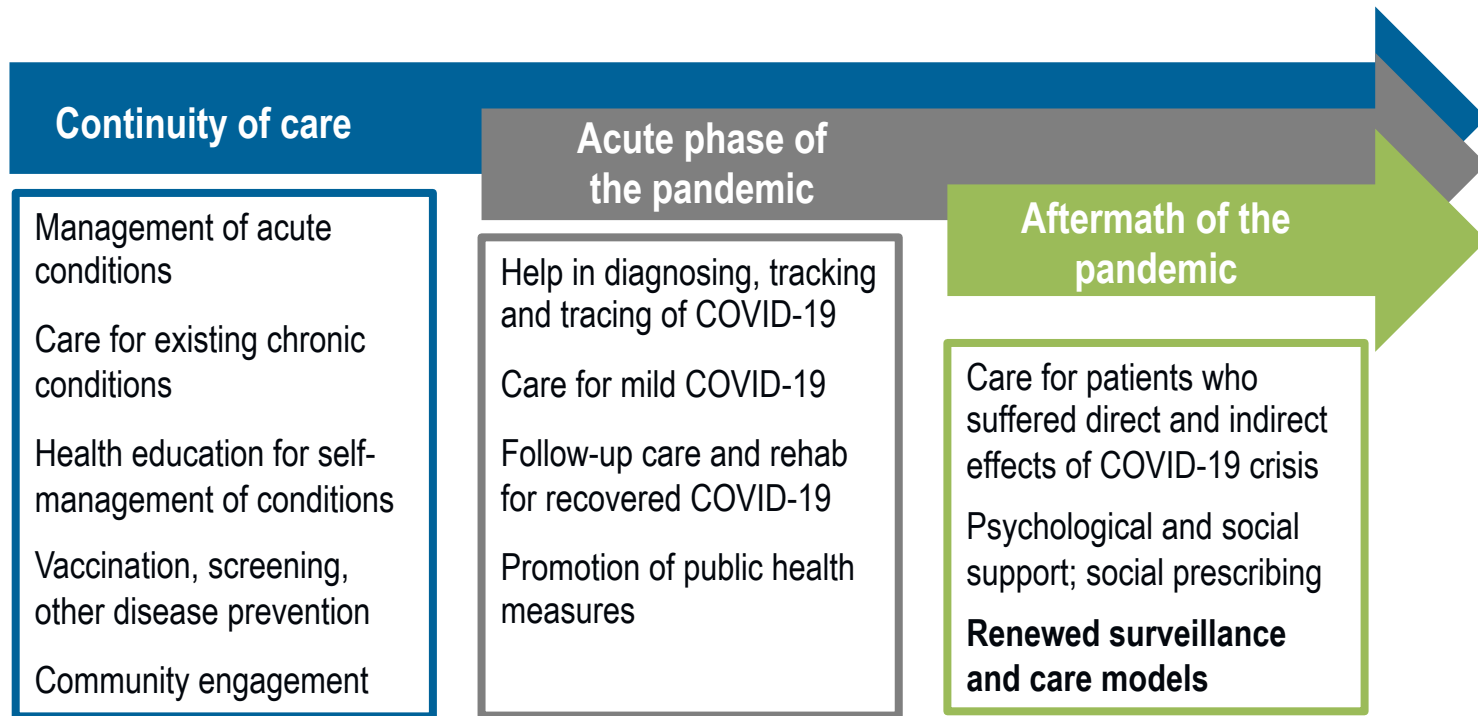
Source: OECD/European Union (2020): Health at a Glance: Europe 2020. State of Health in the EU Cycle.

Reduction in cancer care

- In **France**, the number of cancer diagnoses decreased by 35%-50% in April 2020 (as compared to April 2019)
- In the **Netherlands**, the number of cancer diagnoses decreased by 26% in April 2020 (as compared to January 2020)



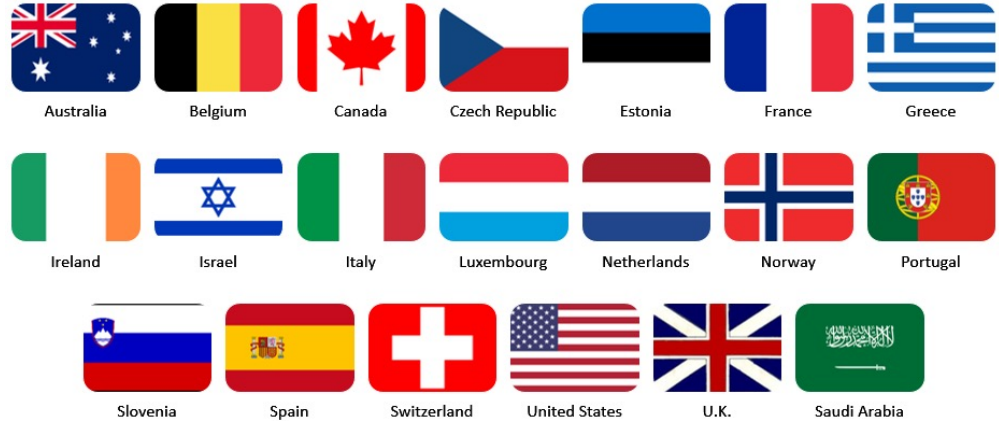
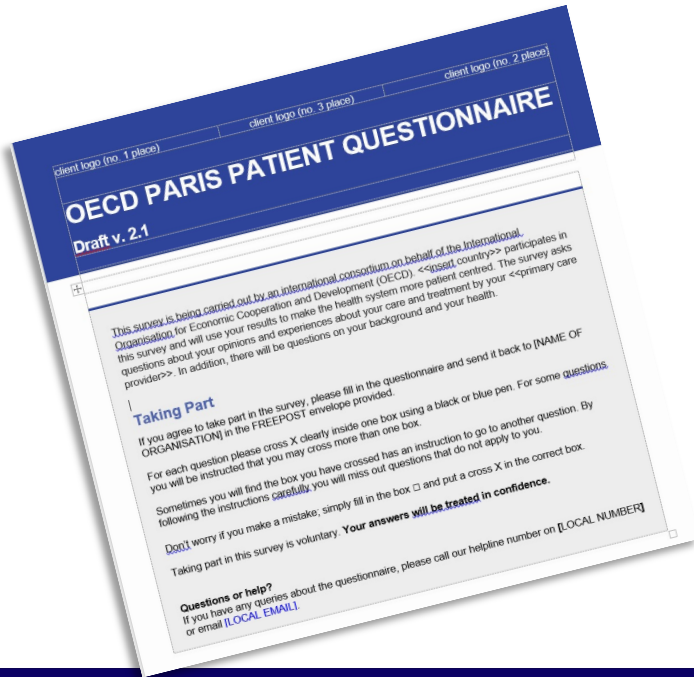
Resilient health systems: Seizing the policy window to strengthen PHC



Source: Adapted from OECD 2021. Strengthening the frontline: How primary health care helps health systems adapt during the COVID-19 pandemic.

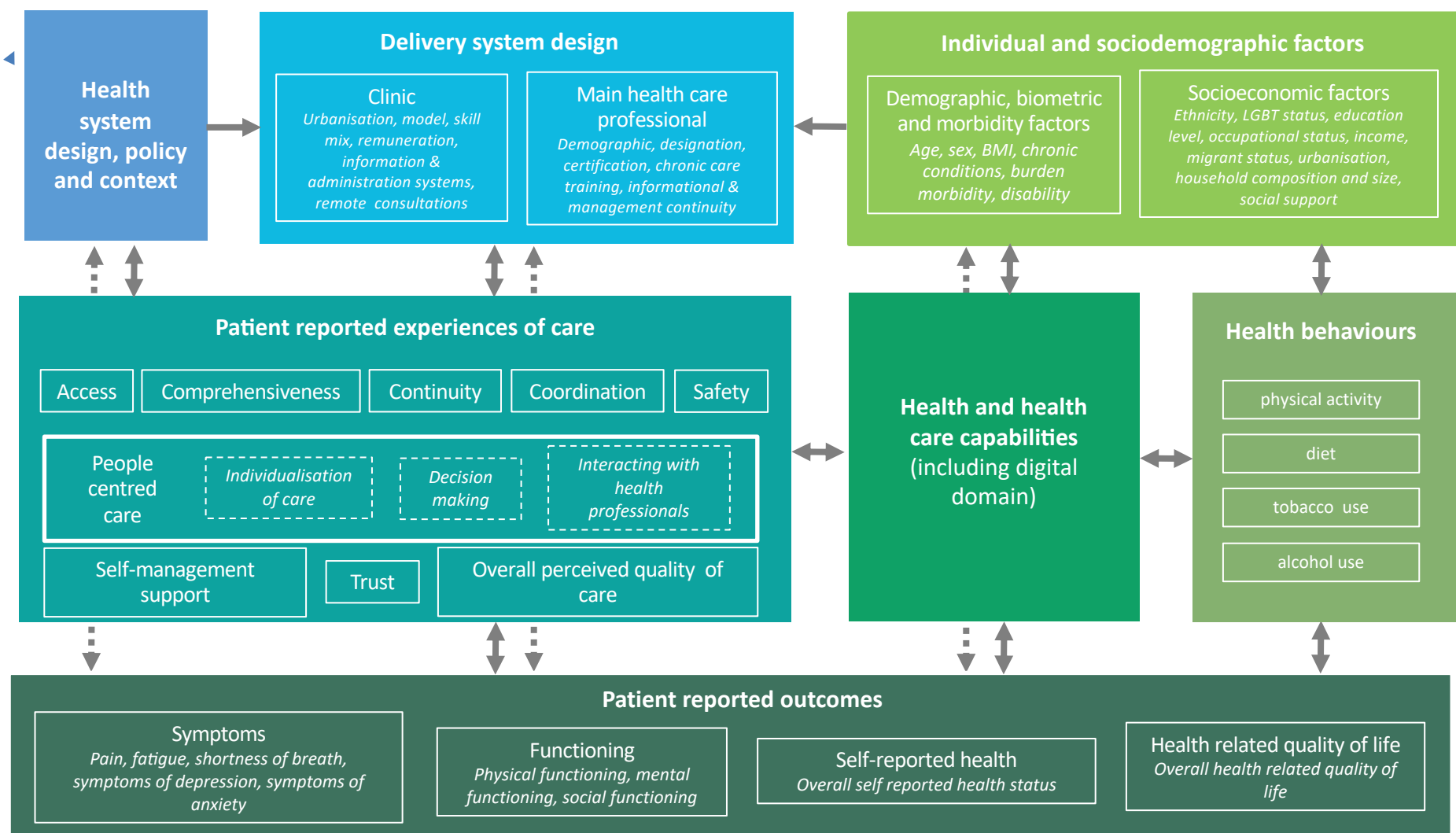


Measuring what matters most: A new generation of health system indicators is needed



PaRIS is the OECD's Patient-Reported Indicator Surveys focused on **outcomes and experiences** of health care that matter most to people





TACKLING CORONAVIRUS (COVID-19)
CONTRIBUTING TO A GLOBAL EFFORT

Visit our dedicated
COVID-19 digital platform:
<https://oecd.org/coronavirus>

 @OECD_Social @fredguanais

 frederico.guanais@oecd.org

 <https://oecd.org/health>

